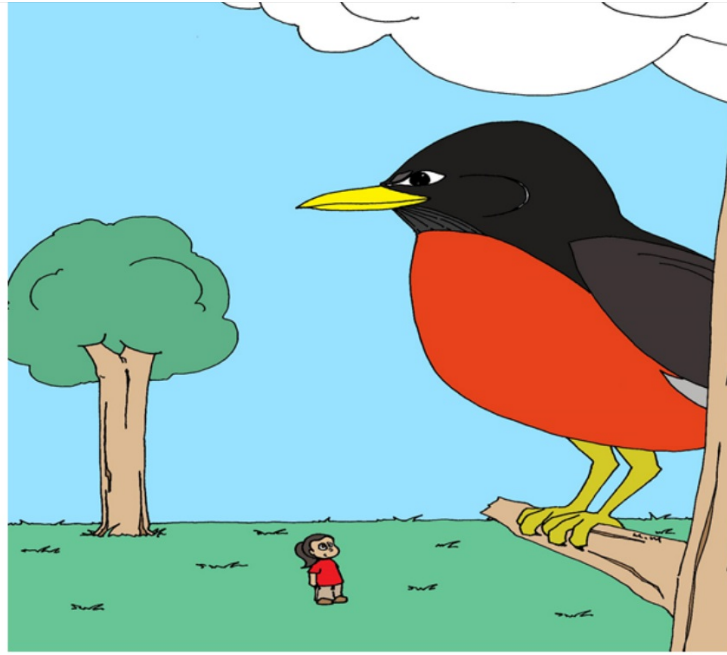
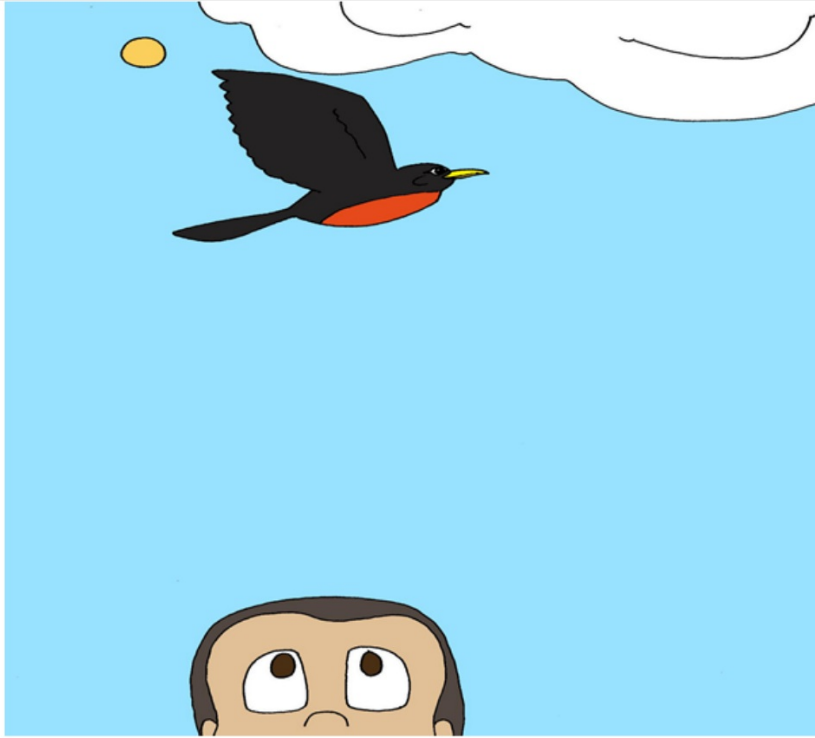


# Łuké néh ts'ihgòh kágodında

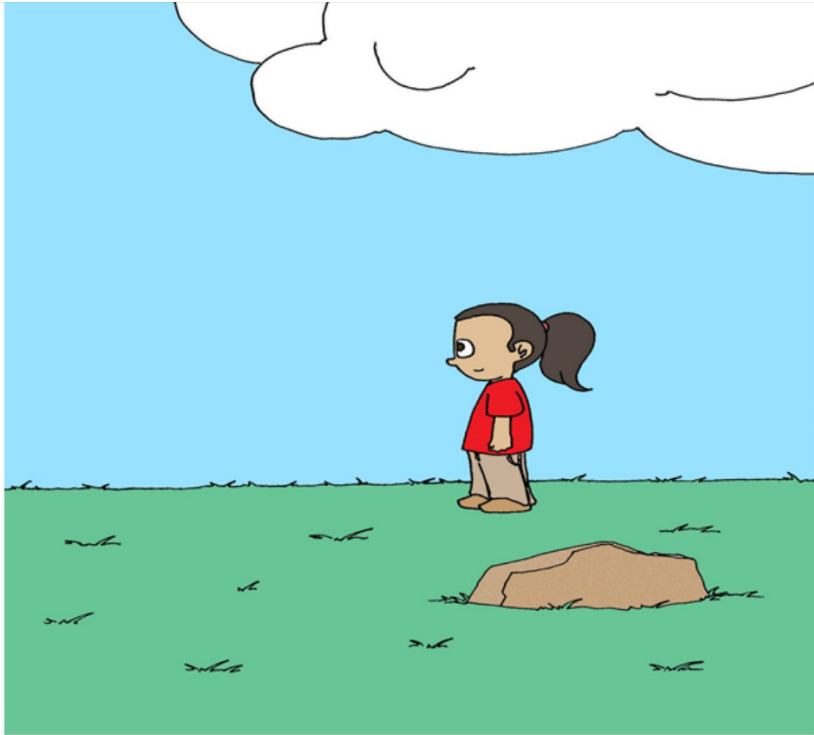




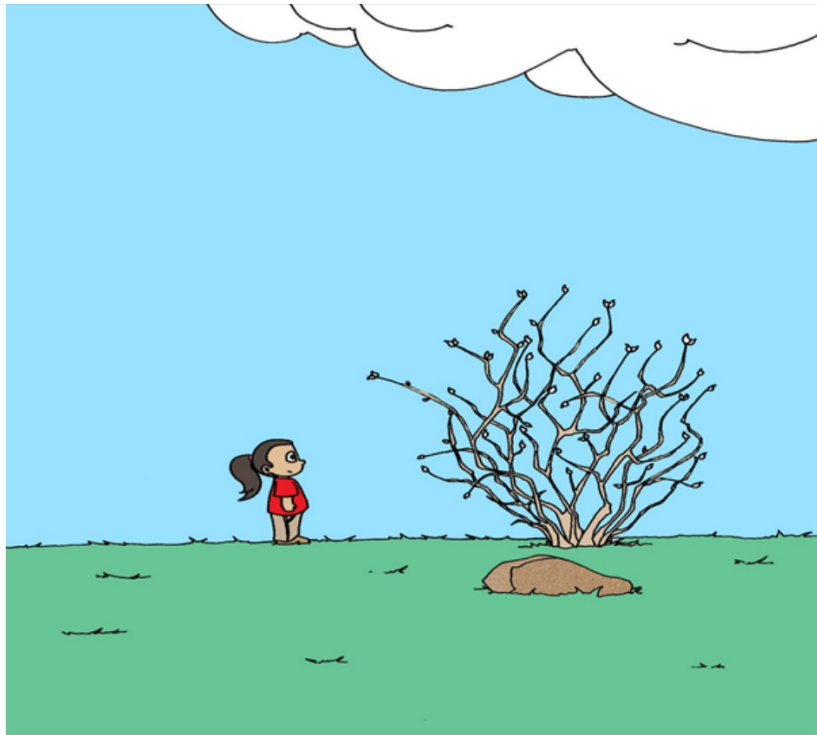
Łuk'éh gots'ẹh ɯmbéh néh  
łaanɿ ts'ihgọh ghaenda



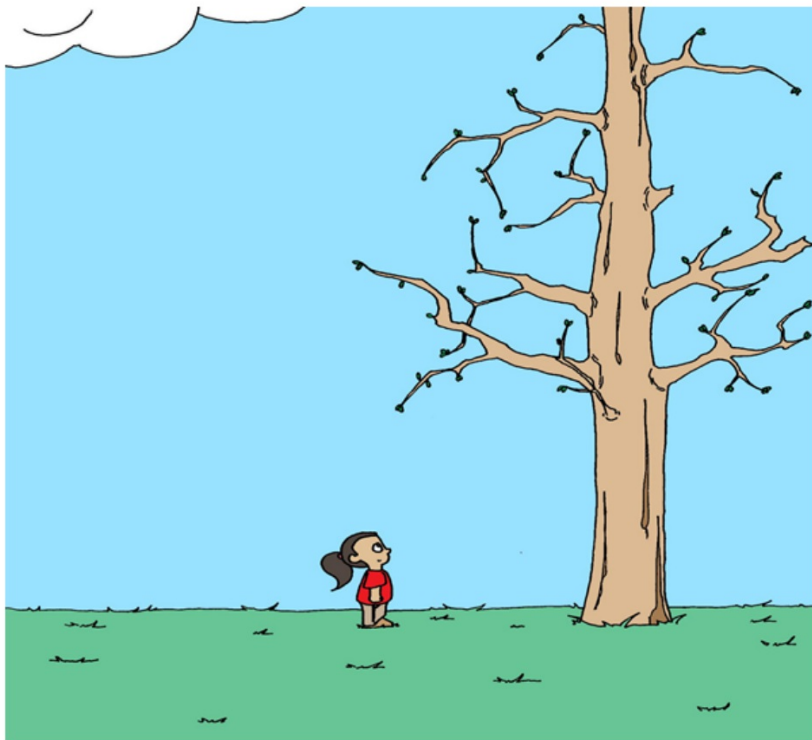
Xat'áá neh ts'ihgòh nádedéh.  
Setá kasındı "Łuk'éh neh ts'ihgòh  
nánodéh gah."



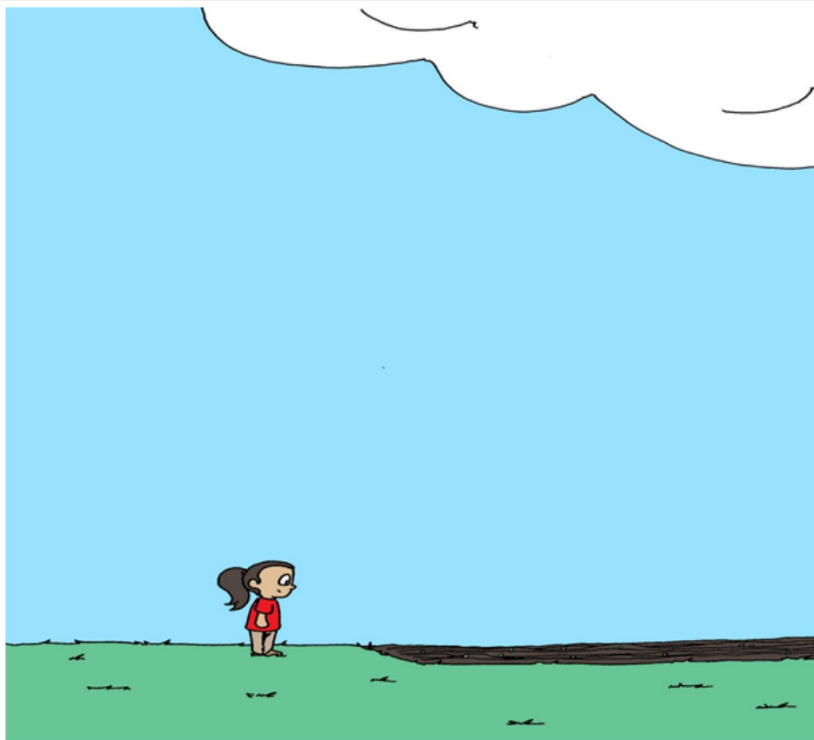
Dúh łuk'éh agujá t'áh ts'ihhóh kagondagha.



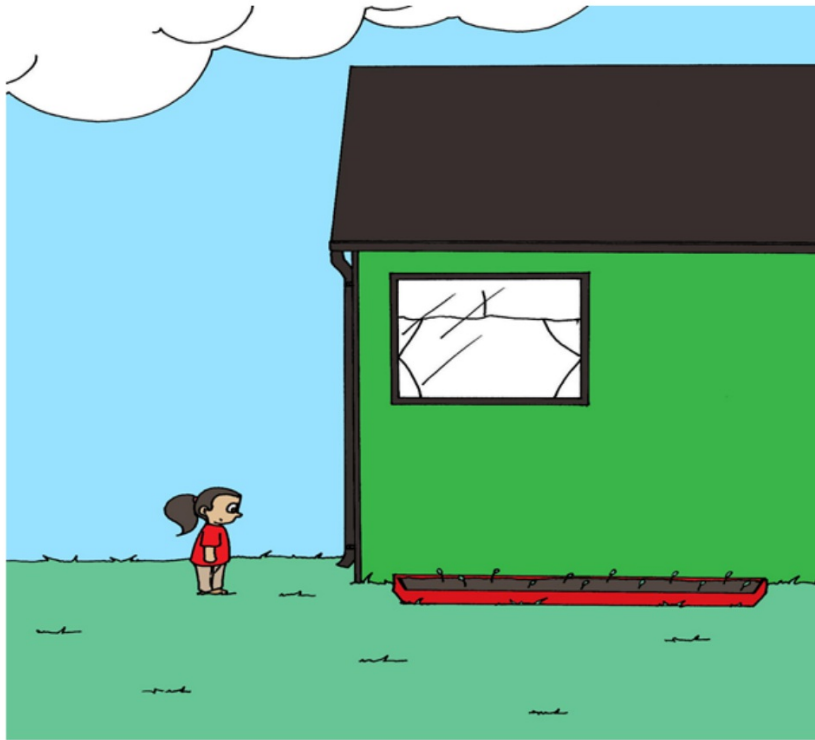
K'a k'éh k'álalíah zọ ghaenda  
ee ts'jhgòh ghaendale.



Ts'u k'eh et'ó kánezhéh zò ghaenda  
ee ts'ìhgòh ghaendale

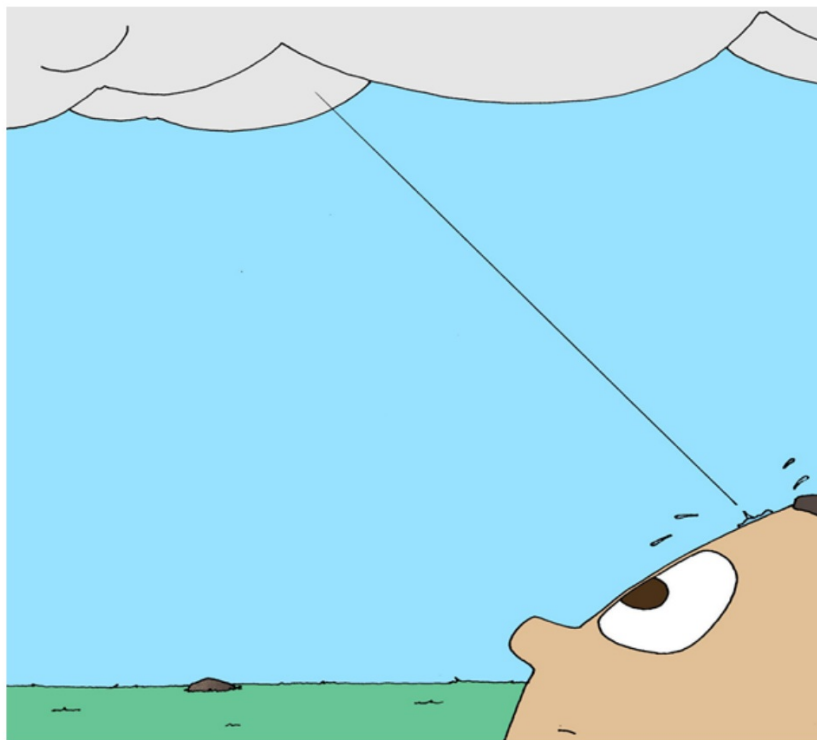


Ahsíi zhánízheh k'eh go ghaenda gọ  
ts'ıhgọh ghaendale.



Et'óah zhánízheh ké goanda gọ éé  
ts'jhgq̄h ghaendale.

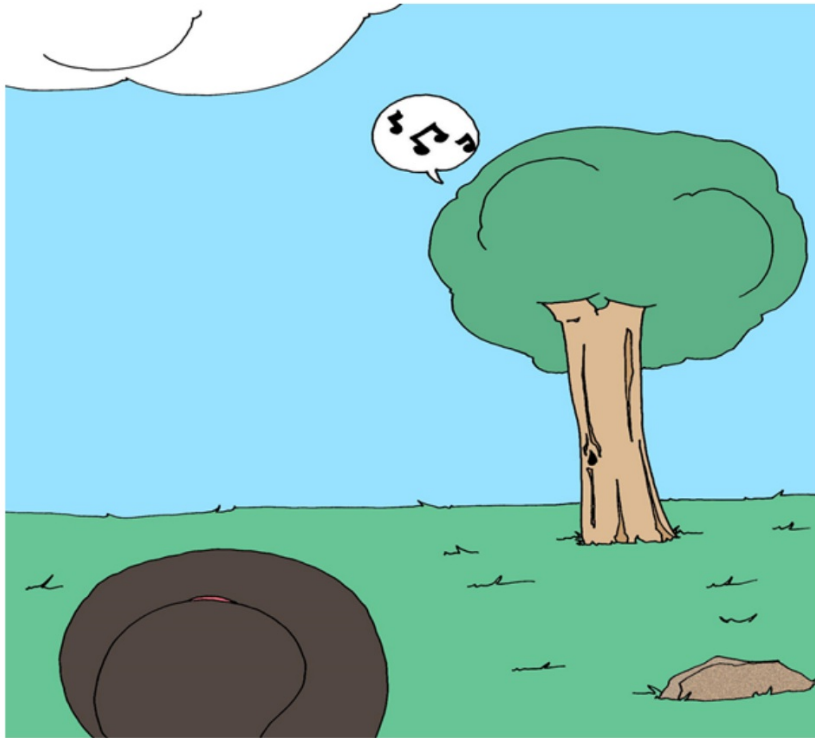




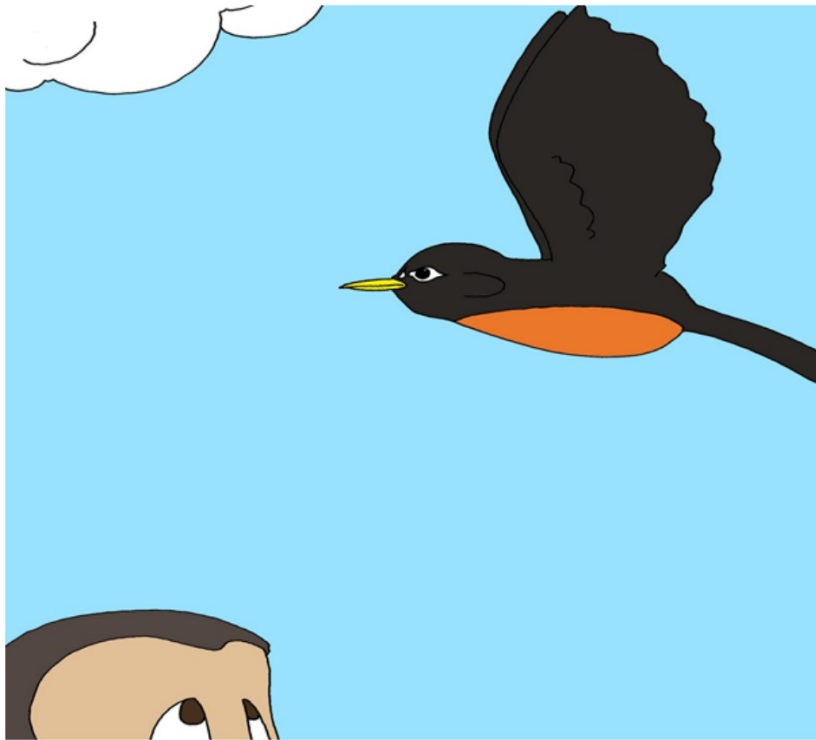
Zhudee gqanda chq sezi kqh nadadheh  
gq ee ts'jhgqh ghaendale.



Et'óah natsí gots'ẹh gu ghaenda gọ éé  
ts'ihgọh gháendale.



Chụạh dédíí ehdétth'e, ká ts'inghòh  
adí medíshọ.



Ts'ingóh gháenda néh ká Łukéh  
kú netthı.