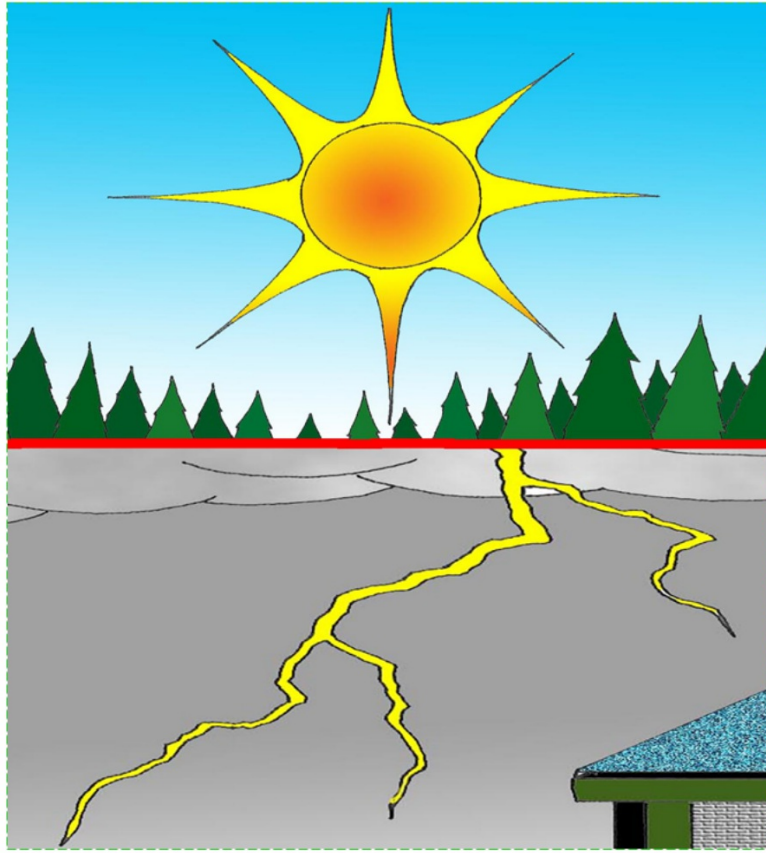
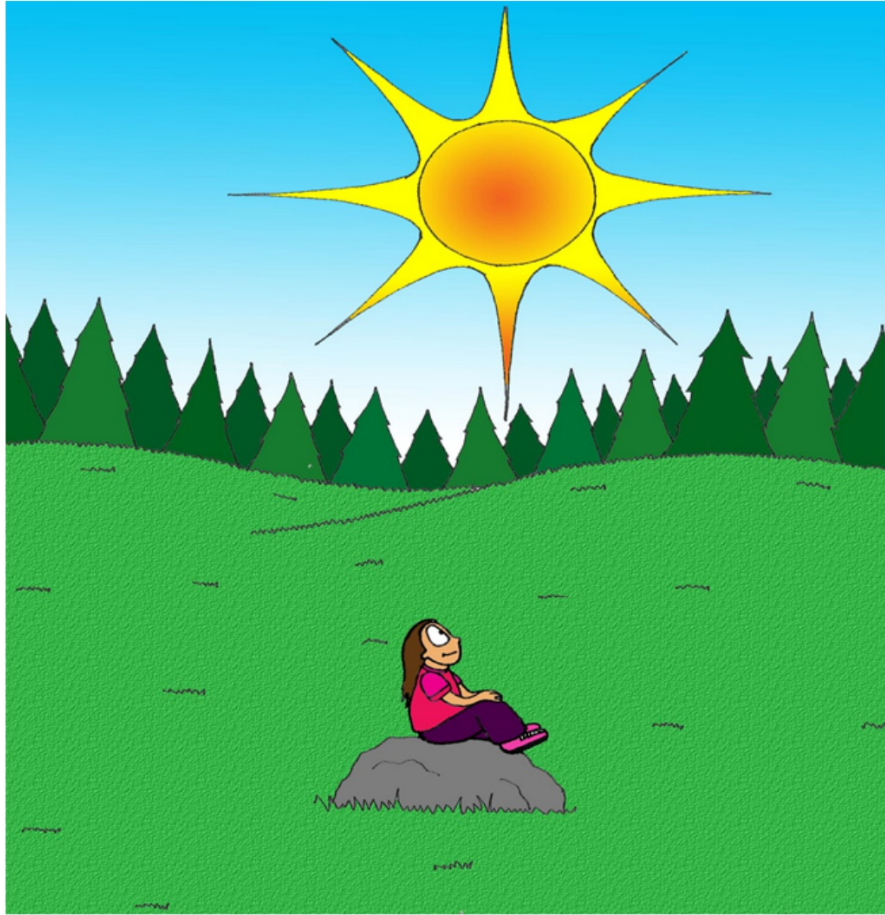
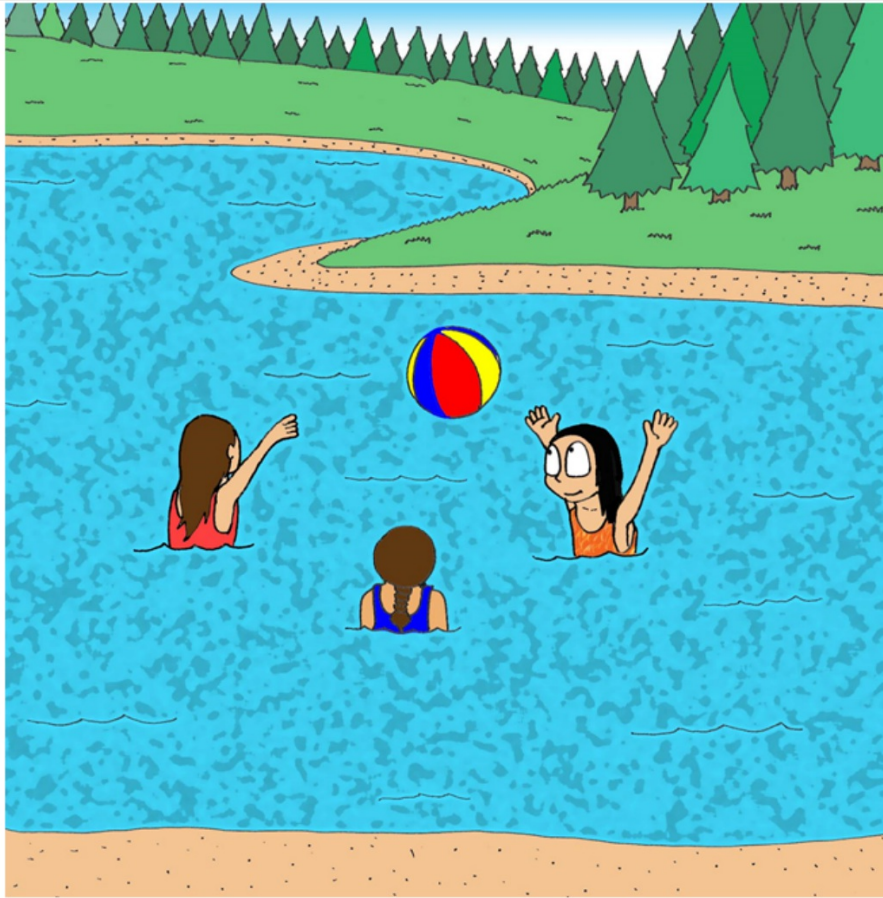


İmbé Kadı dagondih

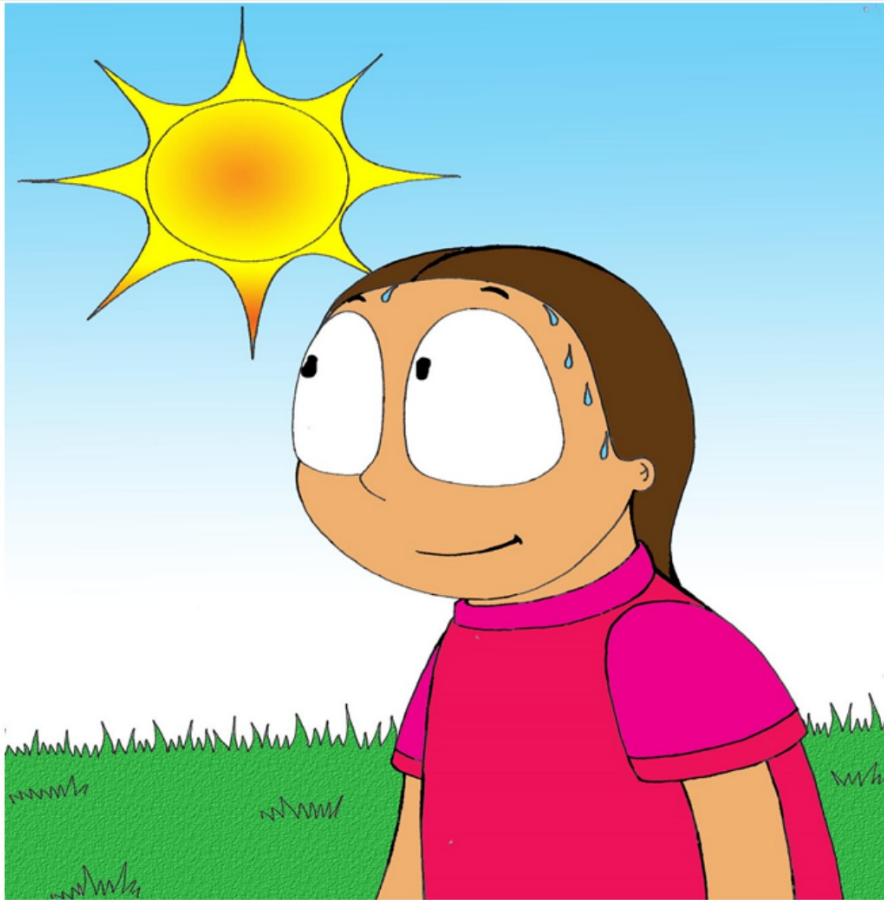




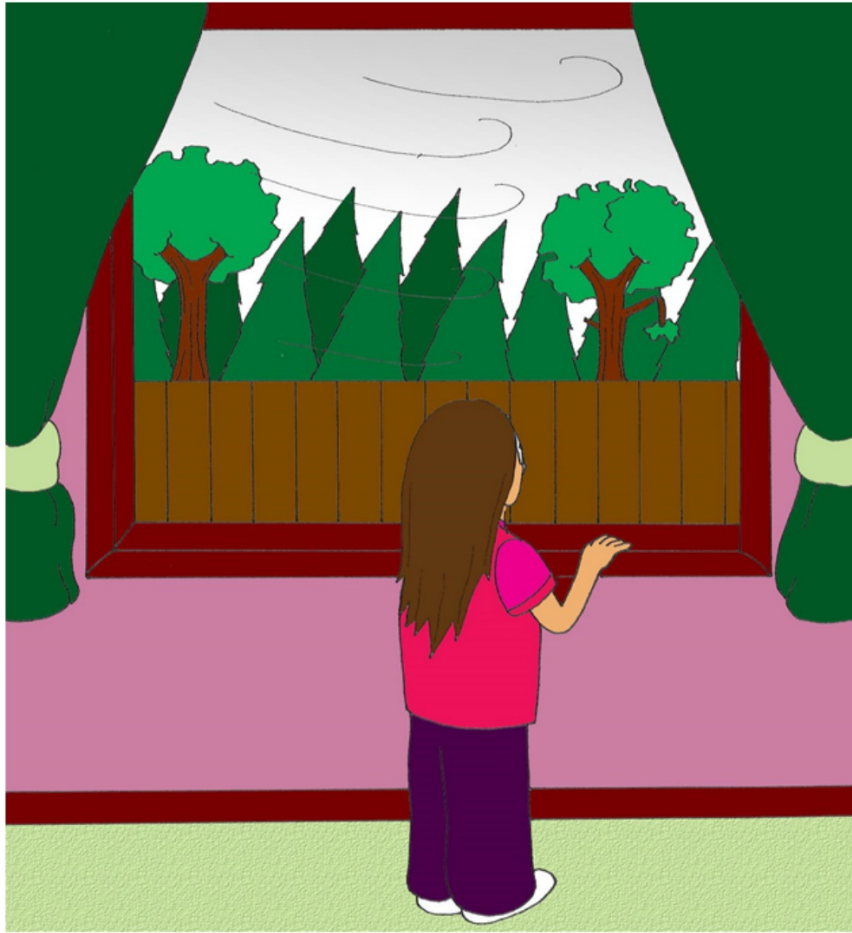
İmbéh néh dúyé kadı dáqondıh ts'edih.



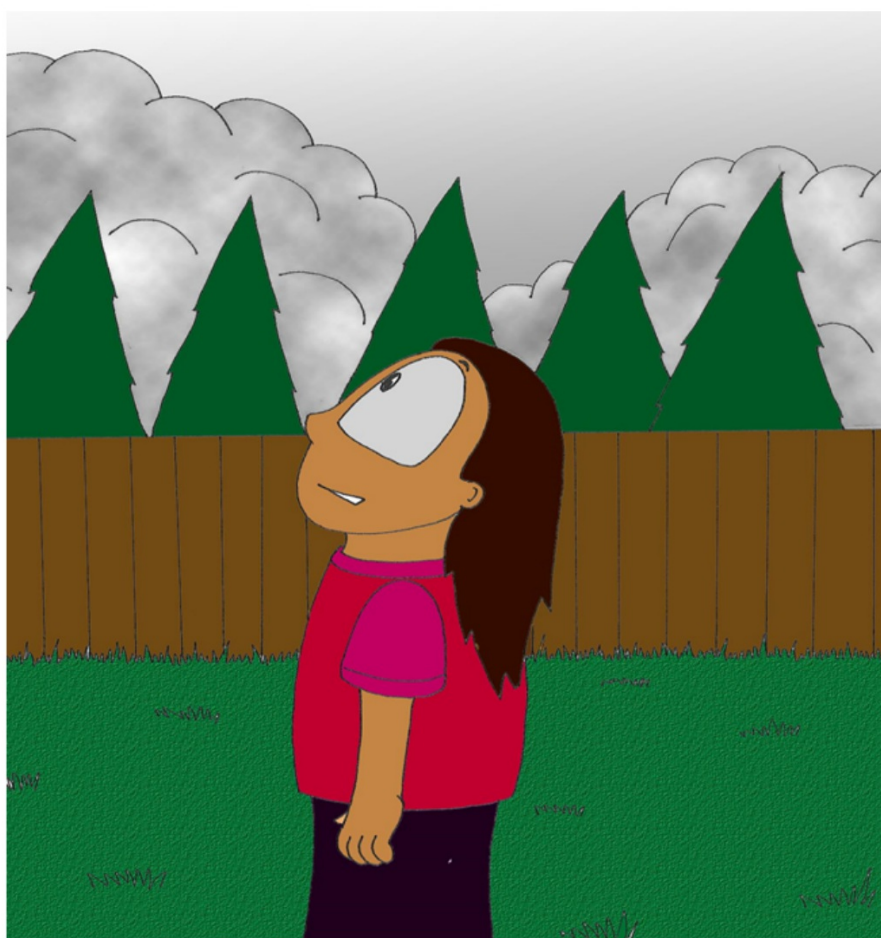
Gókó néh k'embeh.



Se ts'edhelé



Nihts'i nátse met'áh ts'u naɣda.



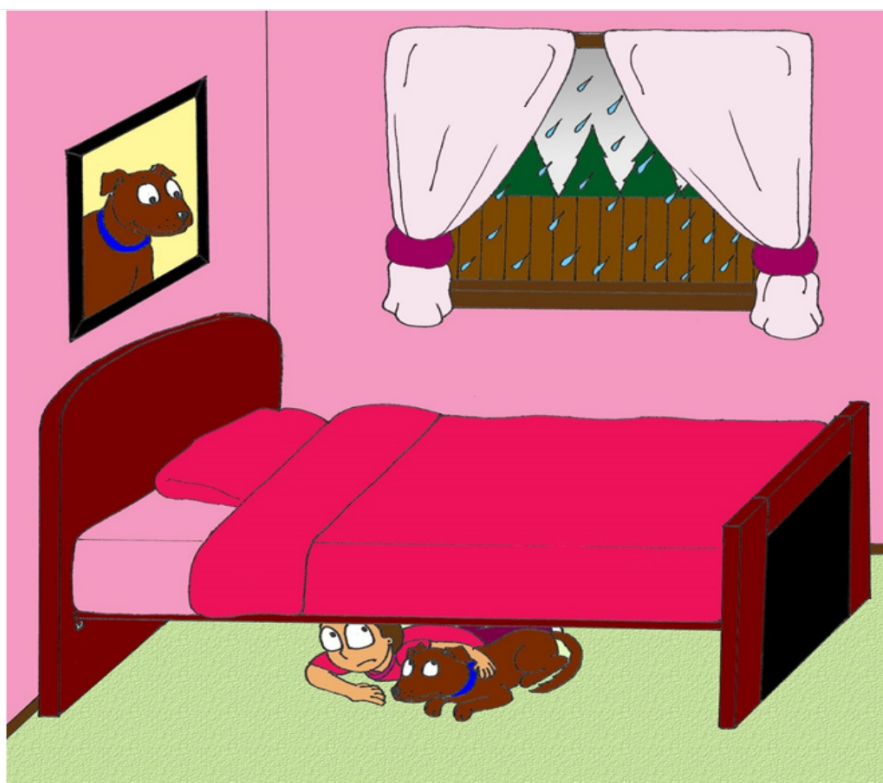
K'oh húj, t'áh dúyé sa ghaenda.



Gótlíi nánhchụh t'áh
nahekúé nihzhẹh tu natéh.



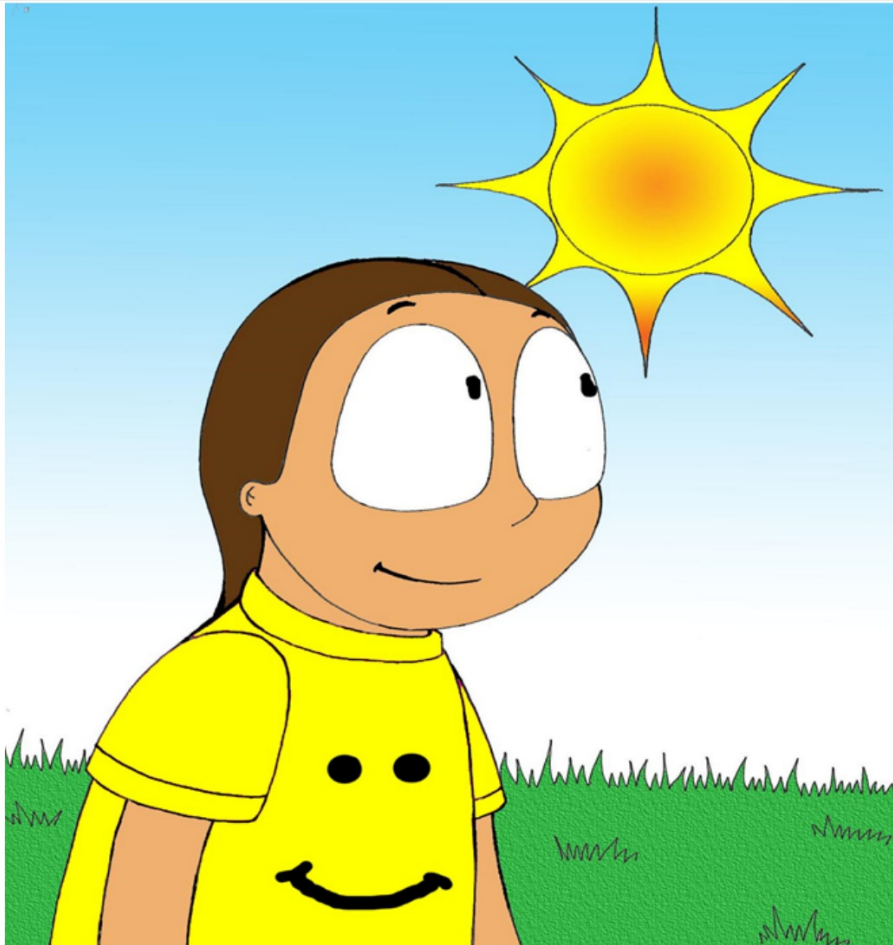
İlu t'áh déhchq



ídíí adí néh nehji. (détth'e)



Nahedhaa ít'ih adih.... gọa.



Kóá, kóshu gókó anagodé gha medíshq.