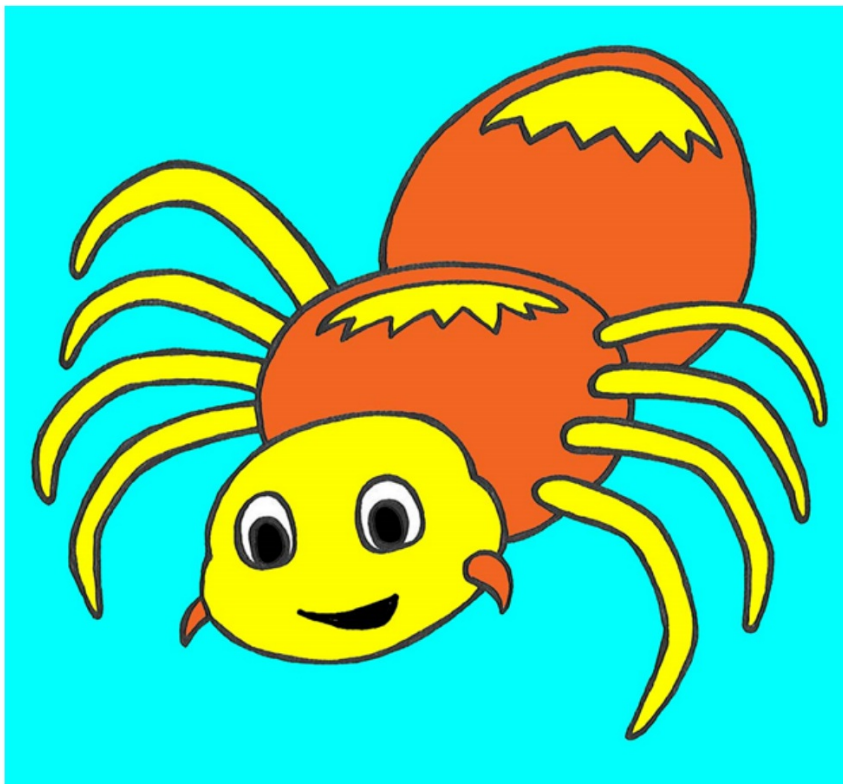


Gots'á ndı





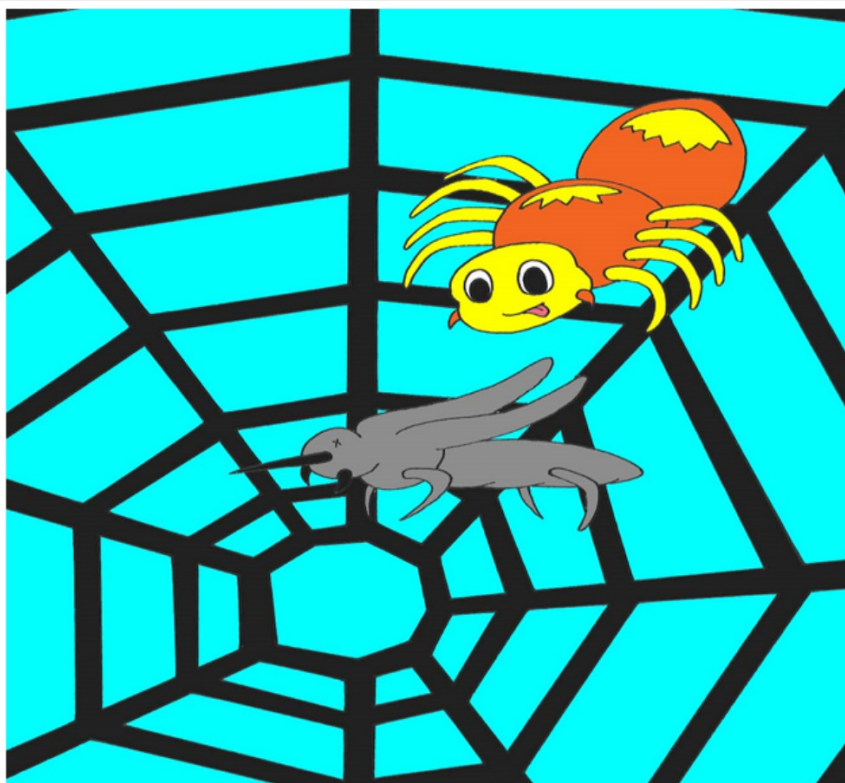
K'álée mǐhé ehtsǐ néh ttha tsé mekéh
eghalaenda gotśeh azhǝne gúlíi hǝot'e.



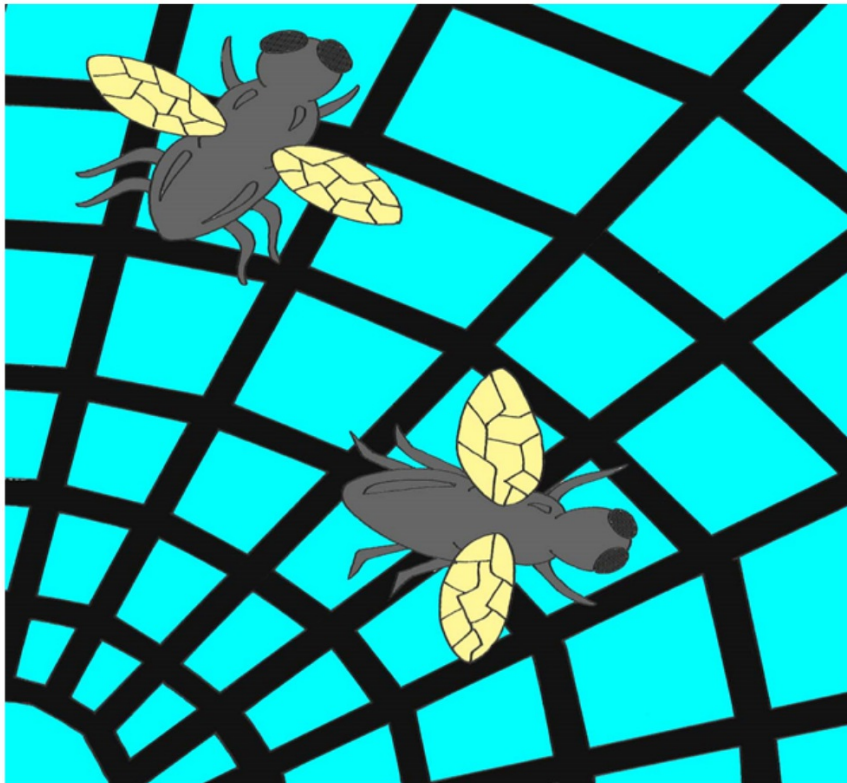
K'alée-mjhe táh ahsí shétj ehdéh.



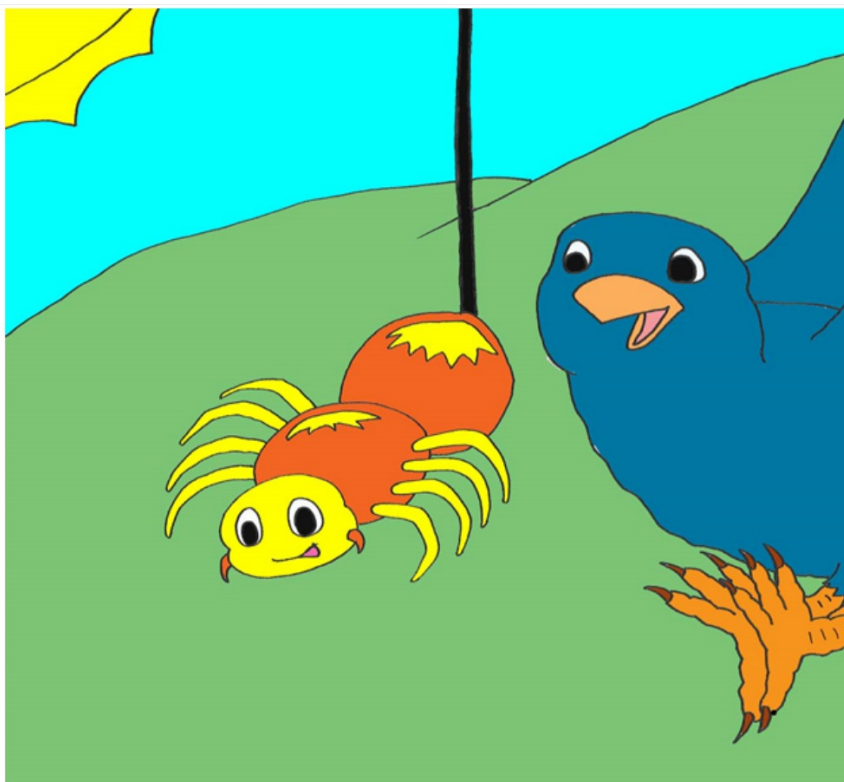
Tth'ih, tehtsá káondih ghq shétj.
Tth'ih nítłahnéh kadule ezhaełé
ezhíi t'áh gots'ándih



Tetsá kadezá sek'alée-mjhé kéh
atj néh meshétj.



Ts'o kádeza chu ehdéh. Ts'o
chu kadule met'áh ezhats'jlé.



Nahemq ndéh ts'andih edih tetsá dzqot'e meshétı. Sı chu chųah gots'eh golqah menda sezhegezheh.